



Livestock Production

Animal Anatomy, Physiology and

Animal Health

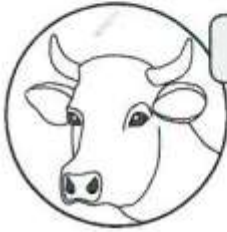
Handout 8

Cattle Lumpy Skin Disease

Cattle – lumpy skin disease

Identification of disease with daily observation card

Observation



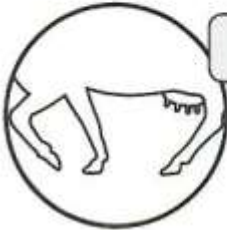
Behaviour

- head down



Skin

- lumps in skin, all over the body



Walking

- slow
- with difficulty



Eating

- doesn't eat

Examination



Temperature

- $>40^{\circ}\text{C}$

Skin

- lumps in skin, all over the body
- lumps attached to underlying tissue



Lymph nodes

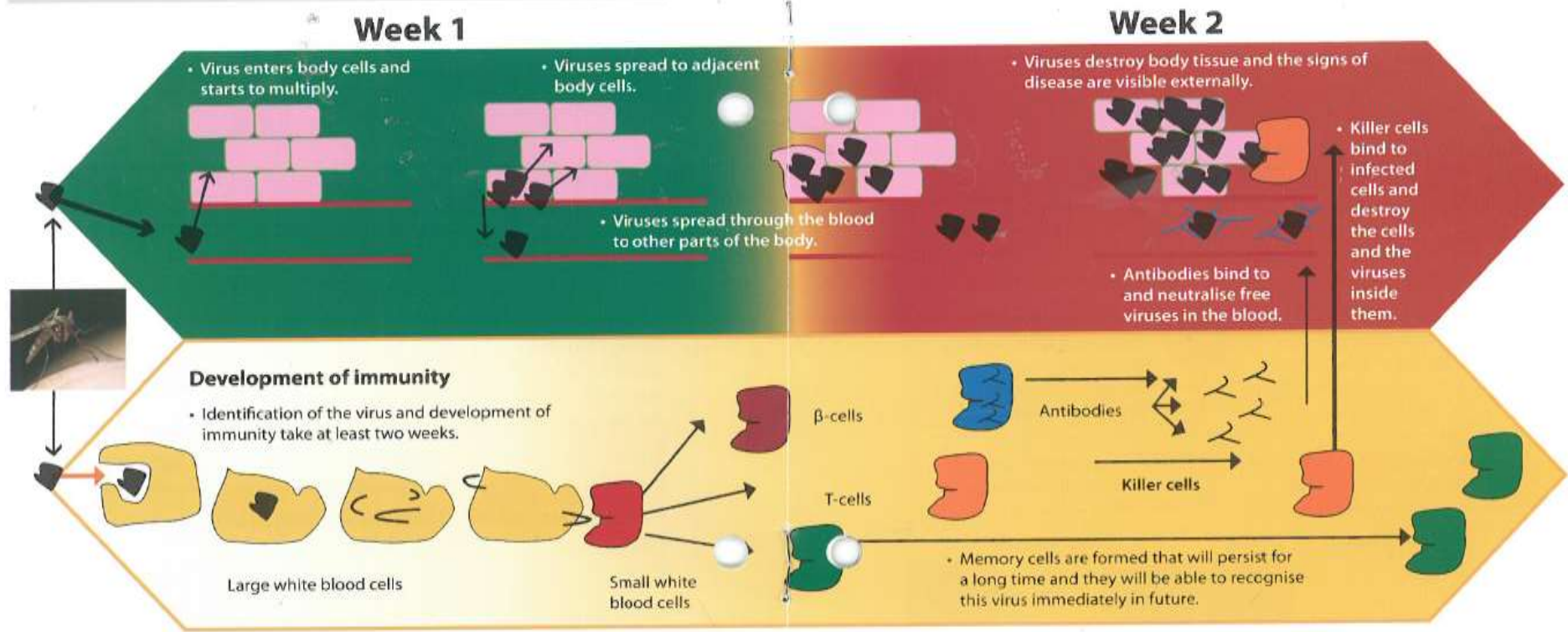
- enlarged



Distinctive signs of disease for these conditions are in the red blocks.

Graphical illustration of the disease development process for lumpy skin disease from transmission of the virus (infection) by the biting insect, until the first signs of disease are visible in the animal.

Remember, that the development process and the type of body cells infected differ for each viral disease.



After infection, the body develops immunity against the virus disease, but this takes **at least two weeks**.

The limitation is that the development of protective immunity takes longer than disease development during which the disease causes damage to the body.